



HP S300/260  
TA-06; TA-08

HH  
GH-502-06  
GH-502-08



Shower Trim - ADA  
**3501-CYL-532SH-2.0-TRM**  
Requires 262X-BODY



HPI S300/260  
TA-07; TA-08; TA-38

HH  
GH-502-07  
GH-502-08  
PH-503-07



Tub/Shower Trim - ADA  
**3502-CYL-532SH-2.0-TRM**  
**3502-CYL-532SH-2.0-SS-TRM**  
(Slip Spout Option)  
Requires 262X-BODY



HP S300/260  
TA-06; TA-08; TA-09

HH  
GH-502-06  
GH-502-08  
GH-502-09

Shower/Hand Shower Trim - ADA  
**0488-3505-T736-2.0-TRM**  
Requires 262X-BODY  
& 2DIVBODYSRT



HP S300/260  
TA-07; TA-08; TA-10

HH  
GH-502-07  
GH-502-08  
GH-502-10

Tub/Shower/Hand Shower Trim - ADA  
**0488-3506-T736-2.0-TRM**  
Requires 261XBODY & 3DIVBODYSRT



**GUEST**



HP S300/260  
KA-02  
HH  
GH-501-04

Single Handle Kitchen Faucet - ADA  
**S-2302-ST5-PD-1.5**



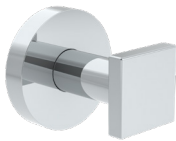
HP S300/260  
KA-02  
HH  
GH-501-04

Single Handle Kitchen Faucet - ADA  
**SPB-3510-STN**



HP S300/260  
TA-05  
HH  
GH-502-05

Single Handle Lavatory Faucet - ADA  
**CDSL51398-12-1.0**



HP S300/260  
TA-18  
HH  
GH-503-11

Robe Hook  
**1025-673RH-SQ**



HP S300/260  
TA-19  
HH  
N/A

18" Towel Bar  
**353TB-18**



HP S300/260  
TA-17  
HH  
GH-503-10

Towel Ring  
**353TR**

**PUBLIC**

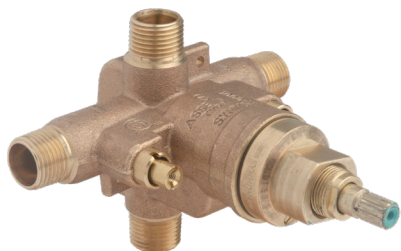


HP S300/260  
TA-34  
HH  
PH-503-01

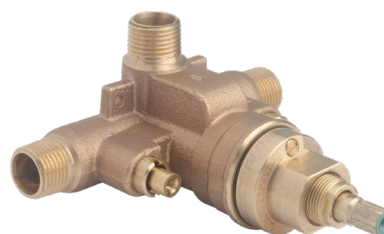
Public Space Automatic Sensor  
Faucet - ADA  
**S-6080-SSUP-0.5**



## Approved Products for Hyatt House and Hyatt Place



Temptrol Tub/Shower  
Valve Body with Stops  
**262XBODY**



Temptrol Shower  
Valve Body with Stops  
**261XBODY**

HPI S4M  
G4M-501-03  
G4M-501-03.1

HP S3  
G-904-02

HH  
GH-502-06



Dual Outlet Diverter Body  
**2DIVBODYSRT**

HPI S4M  
G4M-501-03

HP S3  
G-904-02

HH  
GH-502-06



Triple Outlet Diverter Body  
**3DIVBODYSRT**

HPI S4M  
G4M-501-03

HP S3  
G-904-02

HH  
GH-502-07

