

Virgin Hotels

Shower / Hand Shower Trim

VERSION

A

Location:



- Design & Dimensions subject to change
- Consult your Symmons Sales Representative for Timeline

REQUIRES:
6010E-BODY

"THIS DOCUMENT CONTAINS PROPRIETARY INFORMATION OF SYMMONS INDUSTRIES, INC. AND NEITHER THIS DOCUMENT OR ANY OF SAID PROPRIETARY INFORMATION SHALL BE PUBLISHED, REPRODUCED, COPIED, DISCLOSED OR USED FOR ANY PURPOSE WITHOUT THE EXPRESS WRITTEN PERMISSION OF A DULY AUTHORIZED REPRESENTATIVE OF SYMMONS INDUSTRIES, INC."

PRODUCT NAME:
Shower / Hand Shower Trim

ADDITIONAL NOTE:

DATE
4/24/2019

SYMMONS MODEL#
CD149805NSHSFER

FLOW RATE:
2.5 GPM

VERSION:
A

TOOLING:
No

FINISH:
Fire Engine Red

Approved by:

Approval Date:

Approval Signature:


SYMMONS[®]
 SYMMONS INDUSTRIES
 31 BROOKS DRIVE BRAINTREE, MA 02184
 1-800-SYMMONS www.symmons.com

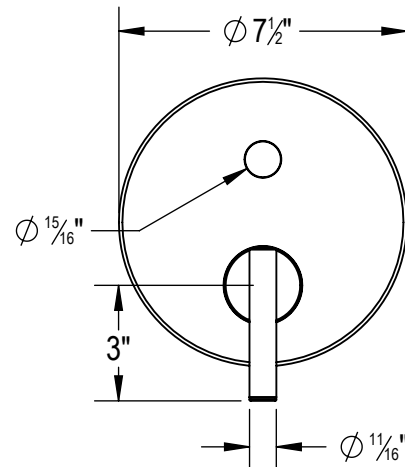
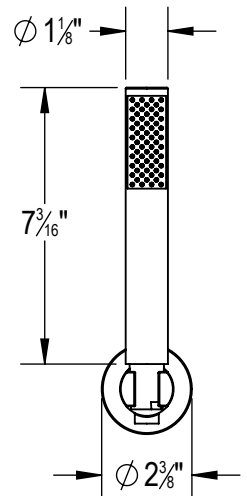
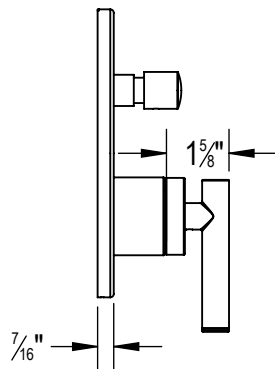
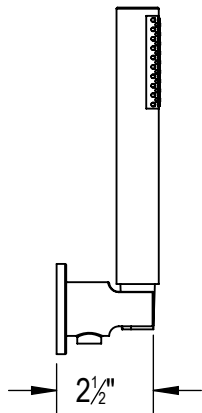
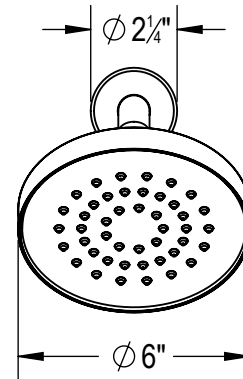
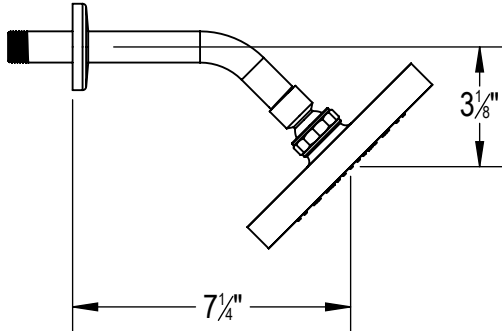
Virgin Hotels

Shower / Hand Shower Trim

VERSION

A

Location:



- Design & Dimensions subject to change
- Consult your Symmons Sales Representative for Timeline

REQUIRES:
6010E-BODY

PRODUCT NAME:
Shower / Hand Shower Trim

ADDITIONAL NOTE:

DATE
4/24/2019

SYMMONS MODEL#
CD149805NSHSFER

FLOW RATE:
2.5 GPM

VERSION:
A

TOOLING:
No

FINISH:
Fire Engine Red

Approved by:

Approval Date:

Approval Signature:

"THIS DOCUMENT CONTAINS PROPRIETARY INFORMATION OF SYMMONS INDUSTRIES, INC. AND NEITHER THIS DOCUMENT OR ANY OF SAID PROPRIETARY INFORMATION SHALL BE PUBLISHED, REPRODUCED, COPIED, DISCLOSED OR USED FOR ANY PURPOSE WITHOUT THE EXPRESS WRITTEN PERMISSION OF A DULY AUTHORIZED REPRESENTATIVE OF SYMMONS INDUSTRIES, INC."

SYMMONS[®]
SYMMONS INDUSTRIES
31 BROOKS DRIVE BRAINTREE, MA 02184
1-800-SYMMONS www.symmons.com